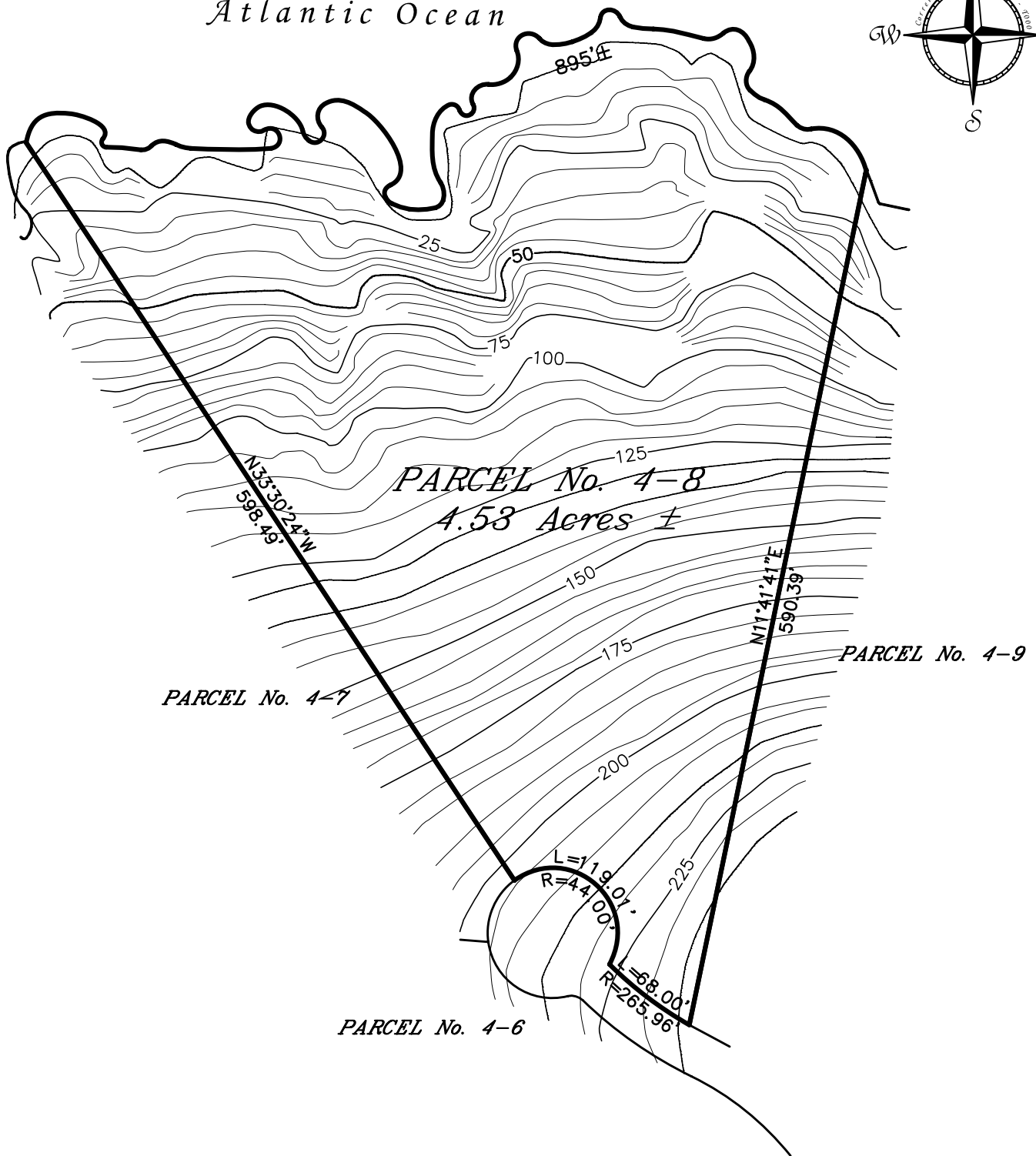
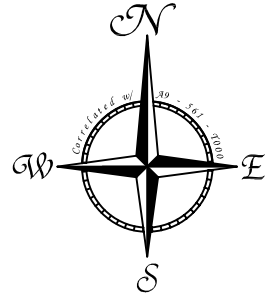


Atlantic Ocean



NOTE:
 THIS IS A PROPOSED SUBDIVISION: PARCEL AREAS,
 DIMENSIONS & SHAPE ARE APPROXIMATE AND
 SUBJECT TO FINAL SURVEYS, COASTAL ZONE &
 PLANNING BOARD APPROVAL.
 THE SURVEYOR & ENGINEER MAY MAKE ALTERATIONS
 AS ACTUAL FIELD CONDITIONS ARE EVALUATED.

SCALE: 1" = 100'



Brian Moseley
 & Associates, Inc.
 Land Surveyors & Consultants

4003 RAPHUNE HILL ROAD
 SUITE 606
 ST. THOMAS, VI 00802
 PHONE (340) 774-5310
 FAX (340) 776-4090

Estate Botany Bay
 No. 7 West End Quarter
 St. Thomas, U.S. Virgin Islands

Parcel No. 4 - 8