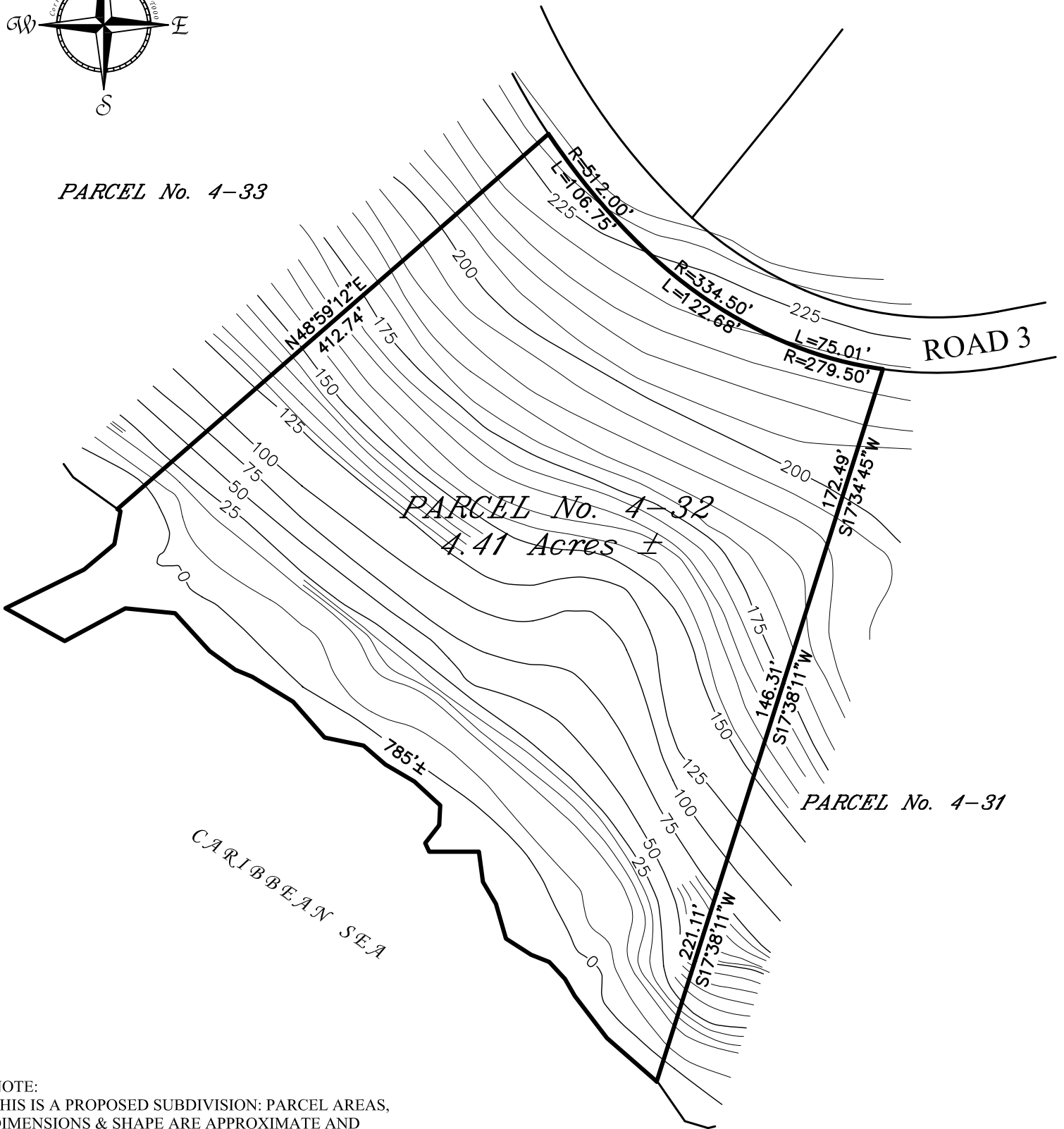


PARCEL No. 4-33



NOTE:
THIS IS A PROPOSED SUBDIVISION: PARCEL AREAS,
DIMENSIONS & SHAPE ARE APPROXIMATE AND
SUBJECT TO FINAL SURVEYS, COASTAL ZONE &
PLANNING BOARD APPROVAL.
THE SURVEYOR & ENGINEER MAY MAKE ALTERATIONS
AS ACTUAL FIELD CONDITIONS ARE EVALUATED.

SCALE: 1" = 100'



Brian Moseley
& Associates, Inc.
Land Surveyors & Consultants

4003 RAPHUNE HILL ROAD
SUITE 606
ST. THOMAS, VI 00802
PHONE (340) 774-5310
FAX (340) 776-4090

Estate Botany Bay
No. 7 West End Quarter
St. Thomas, U.S. Virgin Islands

Parcel No. 4-32